

Safety Alert

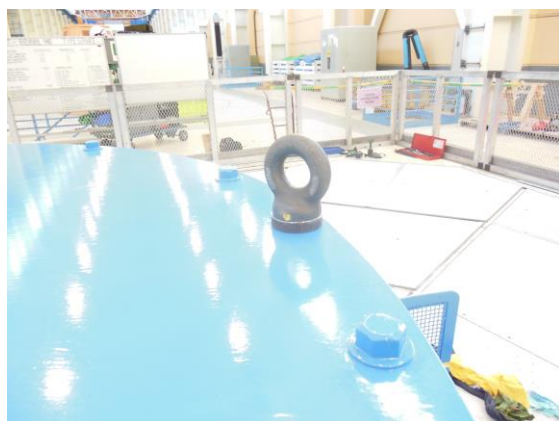
Contact®

Where?

Roxburgh Power Station

When?

9th May 2016



What happened?

A large steel plate arrived from a supplier with the lifting eyes already fitted. When we checked the lifting eyes were found to be the wrong thread for the holes in the plate. The plate weighs in excess of 1600 kg's. The lifting eyes were the correct rating. The diameter of the thread on the lifting eyes is 30mm. The diameter of the hole into which the lifting

eyes had been threaded is inch and a quarter BSW or 31.8mm diameter. This means that the hole is 1.8mm in diameter bigger than the thread on the lifting eye. The eye bolts could easily have pulled out during a lift.

What actions were taken to correct the issue?

Removed the lifting eyes from the plate. Contacted the supplier to advise them of the problem.

It's important to remind staff about the importance of checking with someone who understands threads and diameters before trusting lifting equipment that has been installed by a third party.



How can we contact you?

Name: Steph Winders

Telephone: 03 4400 322

Email address: stephanie.winders@contactenergy.co.nz