



Safety Alert

Critical Risk: CR07 - Fall from height (incl. dropped objects)

Event Title: Dropped Object from height

Location: Huntly

Potential Consequence

Major

Actual Consequence

Insignificant

What happened?

A contractor worker entered an area that was cordoned off with hazard tape. He entered after completing a visual assessment where he determined it was safe to do so (NOTE: this is within the current parameters of the system to do so).

At the time of the visual assessment, he determined that no overhead work activity was visible from ground level at the time.

Shortly after entering the area, a spirit level fell from height and landed approximately 2 metres away from the worker.

No injury occurred.

Prompts/Questions for your team:

What controls are in place to prevent dropped objects falling from height on your sites (e.g. tool lanyards, securing materials, drop nets)?

Are exclusion zones physically preventing access, or are you relying on individual judgement?

How do people confirm it is safe to enter areas where overhead work may be occurring on your site?

How are teams on your site coordinating work at height and work below?

Are visual controls (tape, barriers, signage) clear and consistent and are people aware of what the controls mean?

What can we change to remove the reliance on judgement for high-consequence risks?

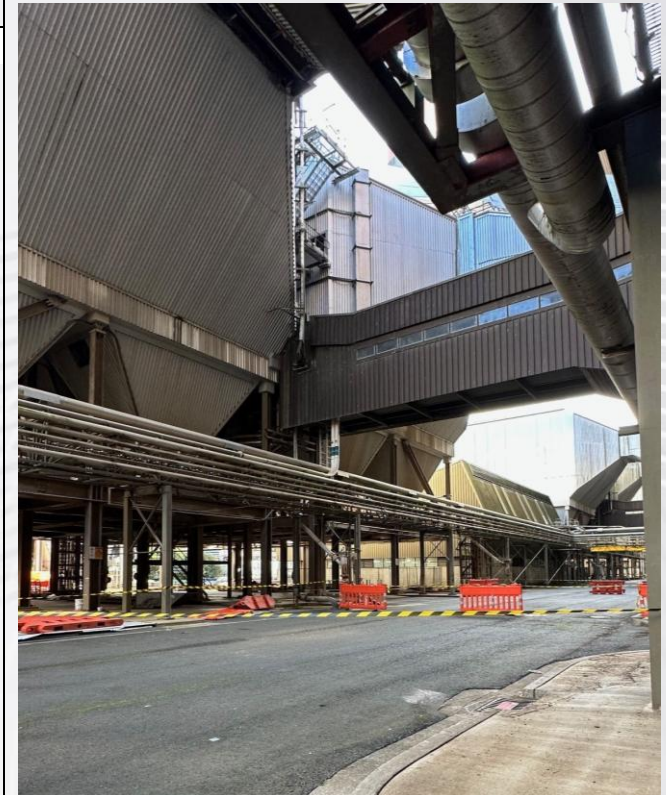


Image of the location with hazard tape prior to increased control of barriers being installed.

Contact Person: